



Box 1087
Weyburn, SK
S4H 2L3

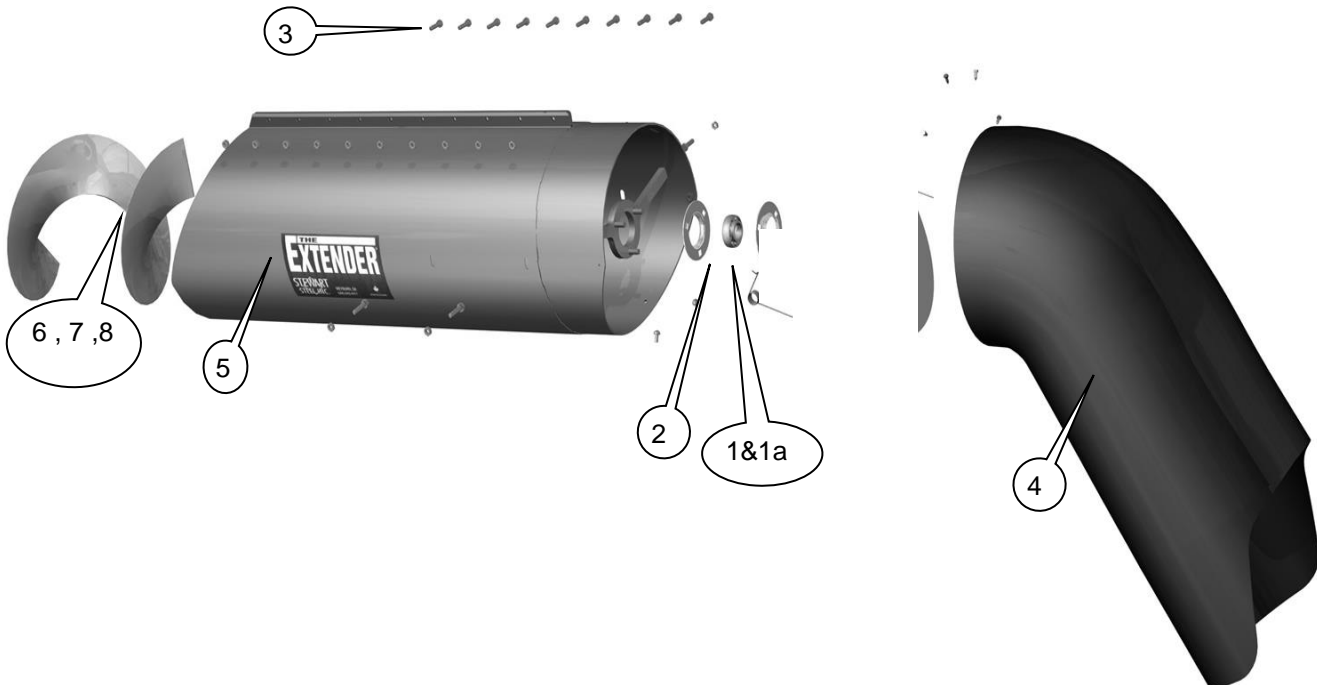
Call Toll Free 1-866-940-4411

Installation Drawing for FT-2 Extender

Hardware kit contains items 1- 3 (in sealed bag)

New Holland FT-2 Extender Installation Instructions

Description	Part Number	QTY
1.Bearing & Collar TR	AEL206-104D1	1
1a.Bearing & Collar TX	AEL206D1	1
2. 62mm flangette	62mm-3	2
3.Bolt package	EBPKFT3-13	1
4.Spout 12"	EXT-CIH-FTSP	1
5.Main sleeve assembly	EXT-NH-FT-OT	1
6.Flighting	EFTR-LH325	1
7.Flighting	EFTR-LH525	1
8.Fliihtina	EFTX-LH425	1



For New Holand TR97,98,99 & TX 66,68

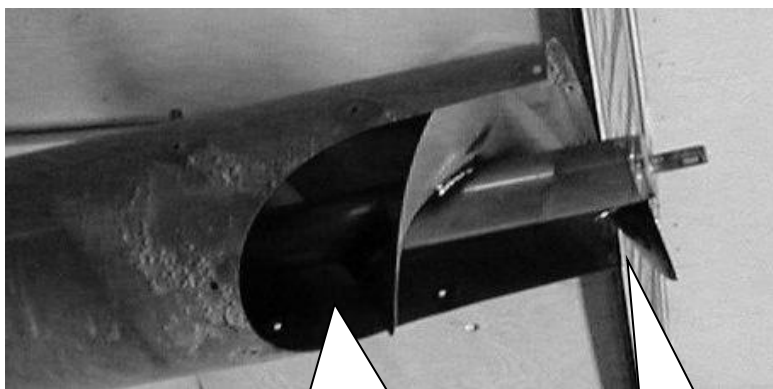
Installation Instructions:

1. Remove end cap, spout, and bearing from unloading Auger. End cap is welded on and stitch weld should be ground off

CAUTION NOTE: *When removing bearing do not pull out on auger as the auger may drop off the spline at the end of the auger. This will result in having to put the auger back in place as well as re-timing the auger. O*

2. Slide on flighting to match up to existing flighting and stitch weld on. Cut flighting off flush with end of auger tube (3 .75" or 4.5" or 5"")(Figure 2) to allow flighting to turn past bearing flange when they are mounted to the bearing shaft (30mm" diameter shaft). This can be done by placing a straight edge across the end of the centre tube and marking the flighting cutting off the excess flighting.

figure 2



Wrap flighting in behind original up to gusset and weld together.

Weld flighting to shaft flush with auger tube

figure 5

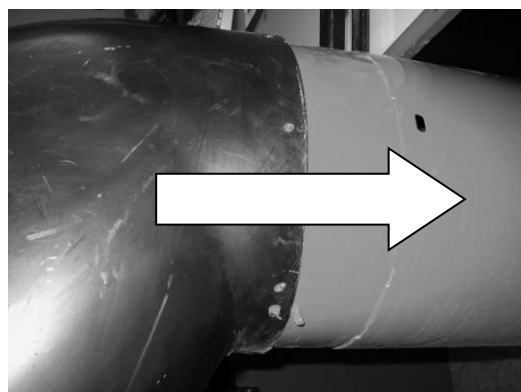


figure 4



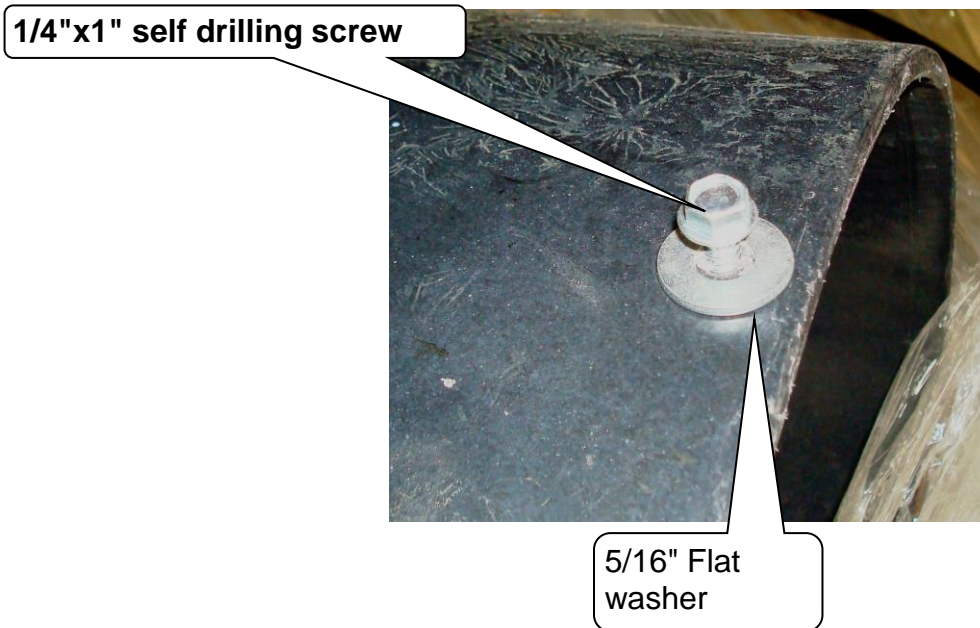
figure 3

Side slots use 5/16 x 1-1/4 Hex bolts inside out with flat washer and locknuts



3. Slide Extender tube in place bolting 1 bolts (5/16 x 1-1/4 hex bolt & locknut) to left hand side matching up with existing slots on auger tube with bolt mounted from the inside out.(Figure 3)
4. Bolt top 8 bolts and tighten on top of sleeve using 5/16 x 1-1/4 hex bolts & locknuts.
5. Install bolt to right side (slotted holes) and tighten (use 2 -5/16 x 1-1/4" hex bolts & locknuts) again mounting the bolt from the inside out.
6. Install bearing and flangettes to hanger bracket with bearing & flangettes to spout side of Extender outer tube sleeve. Use 5/16" Carriage bolts & locknuts.
7. Mount Spout to end of Extender outer tube sleeve by putting on straight over end of tube approx 2".Figure 4) When the spout lines up over the tube (figure 5) put 8 self drilling screws with flat washers(Figure 6) into the spout and extender sleeve to hold the spout on.(Figure5)

figure 6



WARRANTY: STEWART STEEL INC. WARRANTY COVERS ALL THE ABOVE PARTS FOR A PERIOD OF 1 YEAR FROM TIME OF PURCHASE. THE WARRANTY DOES NOT COVER ANY PARTS MADE AND SOLD BY THE ORIGINAL MANUFACTURER OR ANY PARTS THAT WERE PART OF THE ORIGINAL COMBINE CONSTRUCTION. NEVER LEAVE UNLOADING AUGER FULL UNLESS ABSOLUTELY NECESSARY!