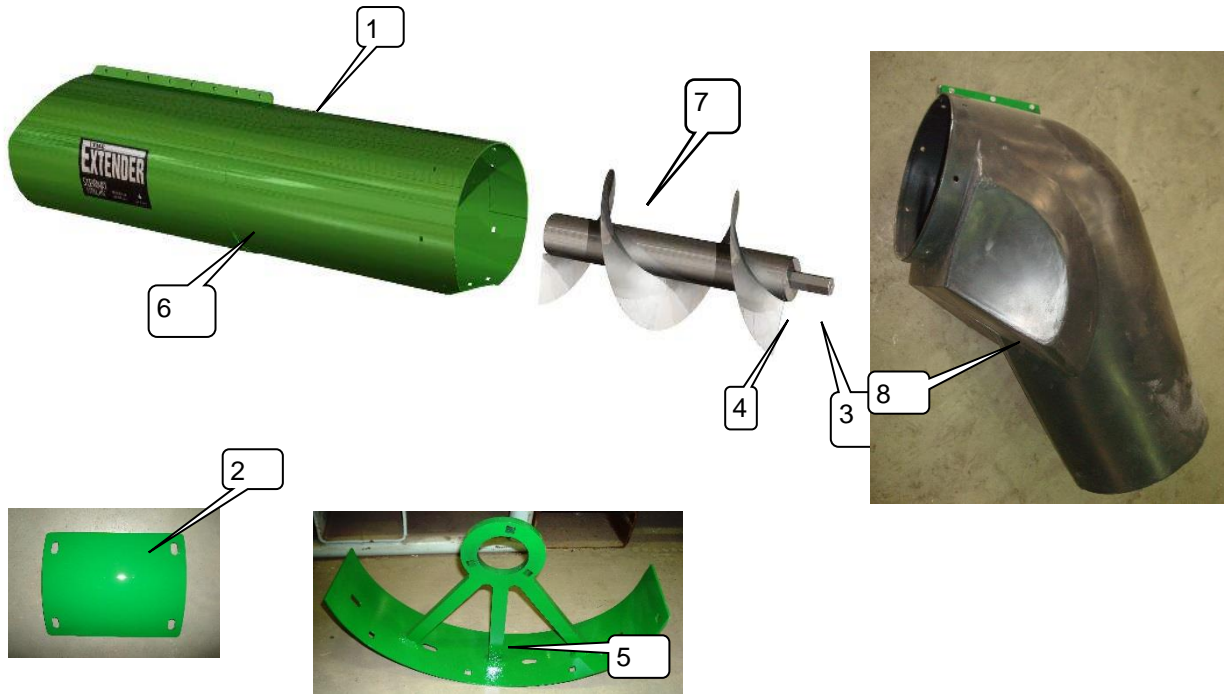




EJ702814 Extender

Extender fits all 14" augers on 60 & 70 Series John Deere Combines



Hardware Kit contains items 1 - 4

Description	Part Number	QTY
1. Bolt Package	EBPK-3514	1
2. Inspection door	EJ603500-DR	1
3. Bearing & Collar	AEL205-100D1	1
4. 52 MM flangettes	52mm-3	2
add hardware kit to items(5-8) in 72x17x17 box		
5. hanger bracket	EJ702814-HB	1
6. Outer tube/clamp	EJ702814-OT	1
7. Auger unit	EJ702814-A	1
8. Spout	EXT-JD-FTSP	1

EXTENDER-EJ702814

By: Stewart Steel Inc.

COMBINE UNLOADING AUGER EXTENSION FOR:

John Deere for Models 9660 to 9670STS and S660

Installation Instructions:

1. Remove plastic spout and grain saver door. Remove 2 bolts that hold up bearing support at end of auger tube. remove 8 mm bolt at end of hex shaft. Save as they must be re-installed.

2. Slide on The EXTENDER's outer tube against the edge of the unloading auger's tube, sliding the sleeve portion over the present tube. Install all sleeve bolts loosely. Make sure bolts are at top of tube and that the 2 slots for the original bolts for the hanger bracket line up for the original hanger bracket. Where the 2 holes are at the top of the extender sleeve portion make sure sleeve fits over the existing bolts that carry the original hanger bracket. On the Extender sleeve band (Figure4) install 5/16 x 1-1/4" hex bolts from inside out using locknuts. This strengthens band where outer tube and sleeve are welded together

3. Slide hex centre stub on to end-shaft of auger until up against original bearing & hanger bracket. Replace factory 8mm bolt and flat washer.(figure 5). Tighten 2 set screws on hub. Slide extender auger in place with flighting aprox. 180 degrees from the original auger.

THIS IS TO ALLOW THE GRAIN TO PASS THROUGH THE ORIGINAL HANGER BRACKET AND THEN GET PICKED UP BY THE OUTER AUGER

Slide auger on far enough to fit over flange on hub(FIQUIRE 6).Install 6 - gr 8 - 3/8 x 1 bolts and lock washers through flange on auger to hub. Do not tighten until step 4

4. Mount new hanger bracket bearing and flangettes at the outer end(on outside of hanger bracket) securing with locking collar to hold auger in proper place. Reach in through window and tighten 6 gr 8 -3/8 x 1 bolts securely.

5. Finally, run auger to see if alignment is proper.

Special Note: if there is vibration in the auger after running loosen the 6 - 3/8 x 1 bolts turn ager over a few times and re-tighten.

6. Install plastic discharge spout in proper position See (Figure 10 & 11)

7. Mount inspection door by pushing 5/16 x 3/4 low shoulder carriage bolts through square bolt holes around inspection door from inside out and secure in place with push nuts. Then secure door with 4 -5/15 wing nuts supplied. (Figure 7,8, &9)

Rear Hex Hub

figure 4

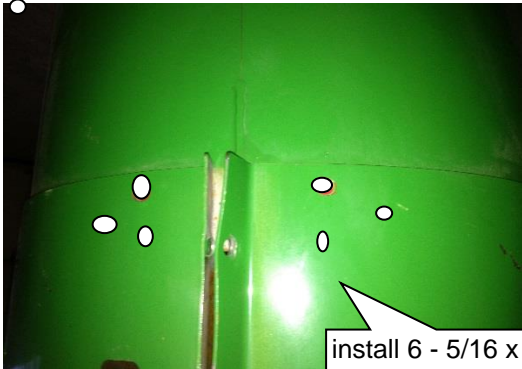


Figure 6



figure 8

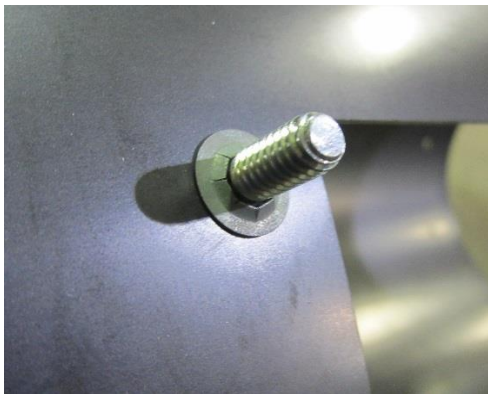


figure 5



figure 7

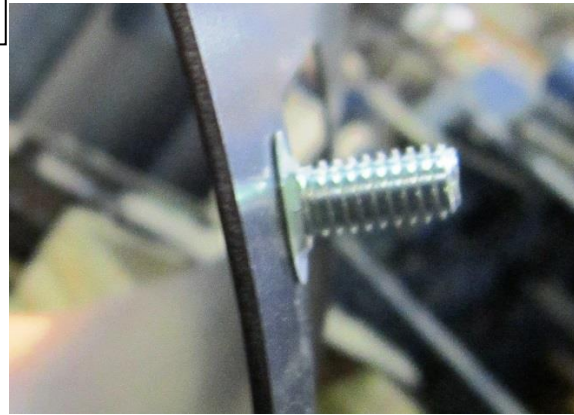


Figure 9



**WARRANTY: STEWART STEEL INC. WARRANTY COVERS ALL THE ABOVE PARTS FOR A PERIOD OF 1 YEAR FROM TIME OF PURCHASE. THE WARRANTY DOES NOT COVER ANY PARTS MADE AND SOLD BY THE ORIGINAL MANUFACTURER OR ANY PARTS THAT WERE PART OF THE ORIGINAL COMBINES CONSTRUCTION.
CAUTION: NEVER LEAVE UNLOADING AUGER FULL UNLESS ABSOLUTELY NECESSARY!**

EJ603514SP Spout



Install Instructions EJ603514 Spout

7. Install spout by sliding over the end of the tube bottom first to tab stop(Figure 4). Line up seam on spout with seam on Extender tube(Figure 5). Tap top tab stops down with hammer to hold spout in position.(Figure 6). Push bottom of spout out against grain saver door hinge and secure bottom tab with self drilling screw first. Install spout support clamp and tighten bolts. The put in self drilling screw on top to hold spout in place. Reach in from end with hooked rod and check that door moves freely. Add the rest of self drilling screws. It is critical for the operation of the Grain saver door that the spout and tube seams line up.

Note" If door binds on one side adjust by turning spout slightly before installing all screws.