



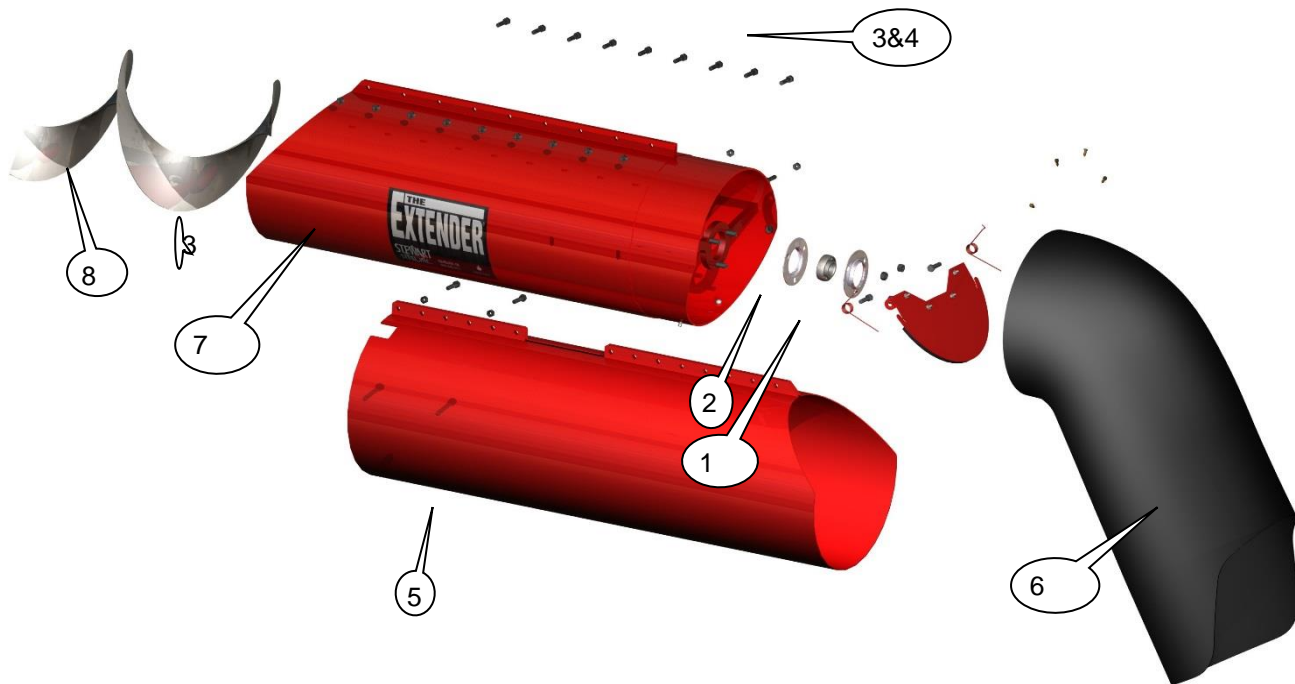
# Case-FT-3 Extender Installation Instructions

Box 1087  
Weyburn, Sask.  
Canada S4H 2L3

## Installation Drawing for FT-3 Extender

### Parts list for FT 3 Extender

Description	Part Number	QTY
1. Bearing & collar	AEL205-100D1	1
2. Bearing Flangettes	52mm-3	2
3. Bolt Package	EBPK-CNH-FT:	1
4. Bolt Package	EBPK-SSS	1
5. Saddle support sleeve	EXT-CIH-SSS	1
6. 12" spout	EXT-CIH-FTSP	1
7. Main sleeve assembly	EXT-CIH-FT3-OT	1
8. Case auger flighting	EFCFT-RH25	1



## For Case Models 1440 - 2588

1. Remove end cap, rubber spout, and bearing from unloading Auger.

**CAUTION NOTE:** *When removing bearing do not pull out on auger as the auger may drop off the spline in the middle of the auger. This will result in having to put the auger back in place as well as re-timing the auger. On some Case combine models there is no inspection door and removing the entire auger may be necessary to do this. This whole procedure if not done correctly could add substantial extra time to the installation.*

2. Slide on flighting to match up to existing flighting and stitch weld on. Cut flighting off flush with end of auger tube (3")(Figure 2) to allow flighting to turn past bearing flange when they are mounted to the bearing shaft (1" diameter shaft). This can be done by placing a straight edge across the end of the 3" tube and marking the flighting. Cut off the excess flighting.

Figure 2

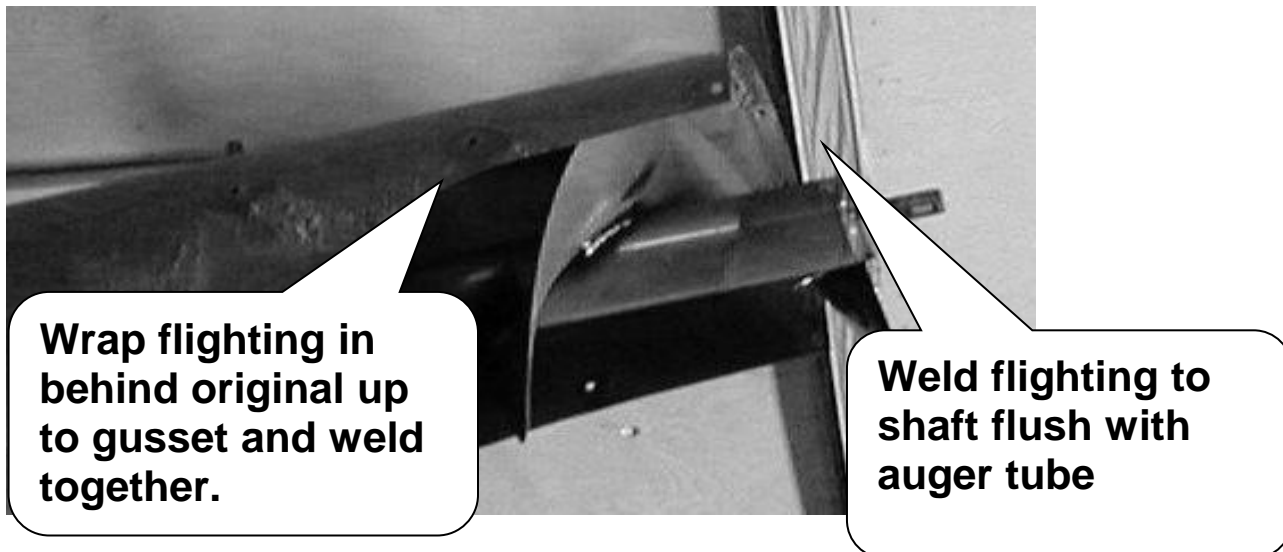


Figure 3

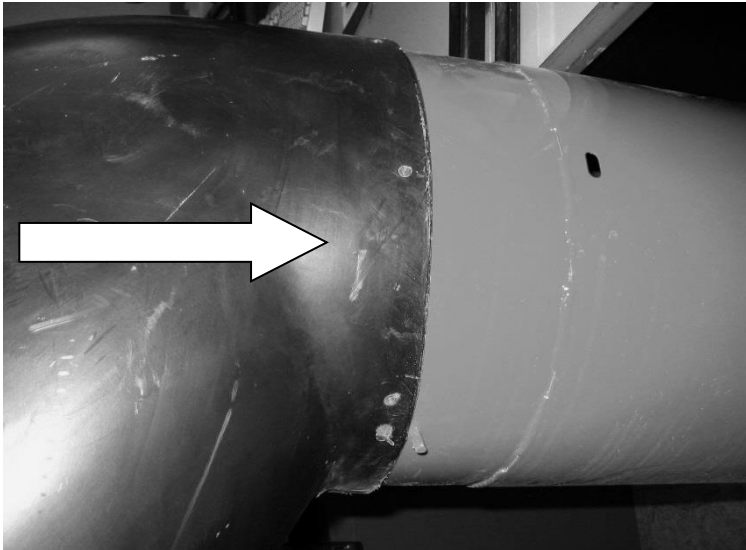


Side slots use  
5/16 x 1-1/4 Hex bolts  
inside out with flat  
washer and locknuts

3. Slide Extender tube in place. Mount 1 bolt (5/16 x 1-1/4 hex bolt & locknut) to left hand side matching up with existing slots on auger tube with bolt mounted from the inside out.(Figure 3)
4. Bolt top 8 bolts and tighten on top of sleeve using 5/16 x 1-1/4 hex bolts & locknuts.
5. Install and bolt to right side (slotted holes) and tighten (use 2 -5/16 x 1-1/4" hex bolts & locknuts) again mounting the bolts from the inside out.
6. Install bearing and flangettes to hanger bracket with bearing & flangettes to spout side of Extender outer tube sleeve. Use 5/16" Carriage bolts & locknuts.
7. Mount Spout to end of Extender outer tube sleeve by putting on straight over end of tube aprox 2"(Figure 4) When the spout lines up over the tube (figure 5 ) put 8 - 1/4" x 1" Flange hex bolts and fender washers (Figure 6) through the spout into the extender sleeve to hold the spout on.(Figure5)

NOTE: It may be necessary to heat plastic spout (hot to the touch)with small torch or heat gun in order to put on spout as spouts are tight. Start by putting on spout from bottom up to clear grain saver door. Spout should go on far enough so door works properly inside

**Figure 4**



**Figure 6**



5/16" Flat washer

**Figure 5**



6. Mount saddle support sleeve as shown below. Remove existing small bracket first, mount new sleeve and then replace original bracket over top of new sleeve. This will substainstially improve the strength and durabitiy of the original tube



**WARRANTY: STEWART STEEL INC. WARRANTY COVERS ALL THE ABOVE PARTS FOR A PERIOD OF 1 YEAR FROM TIME OF PURCHASE. THE WARRANTY DOES NOT COVER ANY PARTS MADE AND SOLD BY THE ORIGINAL MANUFACTURER OR ANY PARTS THAT WERE PART OF THE ORIGINAL COMBINE CONSTRUCTION. NEVER LEAVE UNLOADING AUGER FULL UNLESS ABSOLUTELY NECESSARY!**