



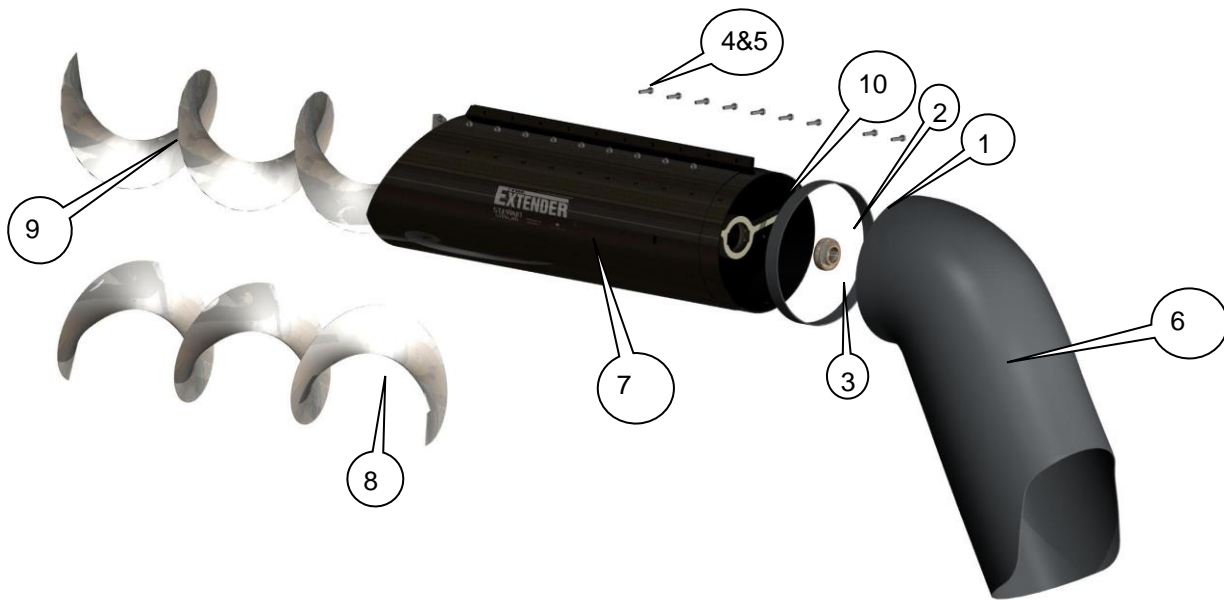
EXT-AGCO/MF-FT3

Weyburn, Saskatchewan, Canada S4H2L3

Toll Free 1-866-940-4411

Telephone: 306-842-4411

Fax: 306-848-3519



Parts List for Agco MF - Ft3 Extender

Description	Part Number	Quantity
1. 1/8 x 1-1/2" x 38" plastic strip	EXT-AGCO-PS	1
2. Bearing & collar	AEL207-106D1	1
3. 72 mm 2 hole flange	72mm-2	2
4. Bolt Package	EBPKFT3-13	1
5. 3/8 x 1-1/4 Carriage bolts and lock nuts		4
6. 12" spout	EXT-CIH-FT3	1
7. Main Sleeve assembly	EXT-Agco/MF-FT3-01	1
8. Flighting Right hand	EFMFT-RH23	1
9. Flighting left hand	EFMFT-LH23	1
10. Bearing Hanger bracket	EXT-AGCO-HB	1

WARRANTY: STEWART STEEL INC. WARRANTY COVERS ALL THE ABOVE PARTS FOR A PERIOD OF 1 YEAR FROM TIME OF PURCHASE. THE WARRANTY DOES NOT COVER ANY PARTS MADE AND SOLD BY THE ORIGINAL MANUFACTURER OR ANY PARTS THAT WERE PART OF THE ORIGINAL COMBINE CONSTRUCTION.

CAUTION:
* NEVER LEAVE UNLOADING AUGER FULL UNLESS ABSOLUTELY NECESSARY!

EXTENDER-EXT-FT3

By: Stewart Steel Inc.

COMBINE UNLOADING AUGER EXTENSION FOR:

Agco Rotary Combines- Massey - Caterpillar

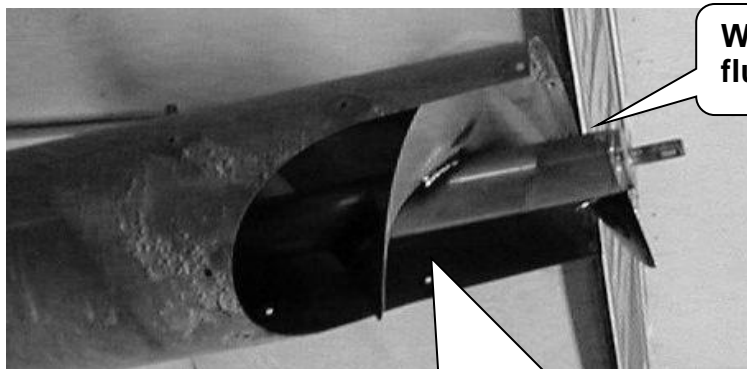
Installation Instructions:

Installation Instructions:

1. Remove end cap, rubber spout, and bearing from unloading Auger.

CAUTION NOTE: When removing bearing do not pull out on auger as the auger may drop off the spline in the middle of the auger. This will result in having to put the auger back in place as well as re-timing the auger. On some John Deere combine models there is no inspection door and removing the entire auger may be necessary to do this. This whole procedure if not done correctly could add substantial extra time to the installation.

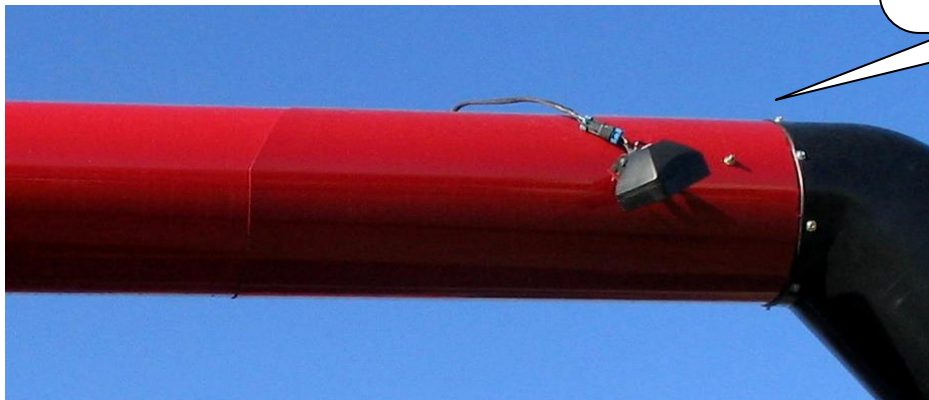
2. Slide on flighting to match up to existing flighting and stitch weld on. Cut flighting off flush with end of auger tube (3 1/2")(Figure 2) to allow flighting to turn past bearing flange when they are mounted to the bearing shaft (1-3/8" diameter shaft). This can be done by placing a straight edge across the end of the 3 1/2" tube and marking the flighting cutting off the excess flighting.



Weld flighting to shaft
flush with auger tube

Wrap flighting in behind original
up to gusset and weld together.

Side slots use
5/16 x 1-1/4 Hex bolts
inside out with flat
washer and locknuts



3. Slide Extender tube in place bolting 2 bolts (5/16 bolts & nuts) to left hand side matching up with 2 existing slots on auger tube with bolts mounted from the inside out, then bolt top 12 bolts and tighten on top of sleeve using 5/16 bolts & flange nuts. Finally install and bolt 2 bolts to right side (slotted holes) and tighten (use 2 locks) again mounting the bolts from the inside out using 5/16 flange nuts & bolts.

4. Install bearing holder bolt and washer and tighten securely.

5. Mount Spout to end of Extender outer tube sleeve (approx. 1 1/4" over end) and drill holes through plastic and steel where marked (small dimple) on plastic spout using 8 - 1/4" self drilling bolts to mount. The seam on the top spout should line up with weld seam on outer ring of extender. With Agco/Massey & Cat a 1/4" x 38 1/4" x 1.5" plastic strip must be inserted between the spout and the tube to take up diameter difference. This strip should be wrapped around the outer ring and held in place with masking tape. Once the spout is then attached excess tape can be removed

