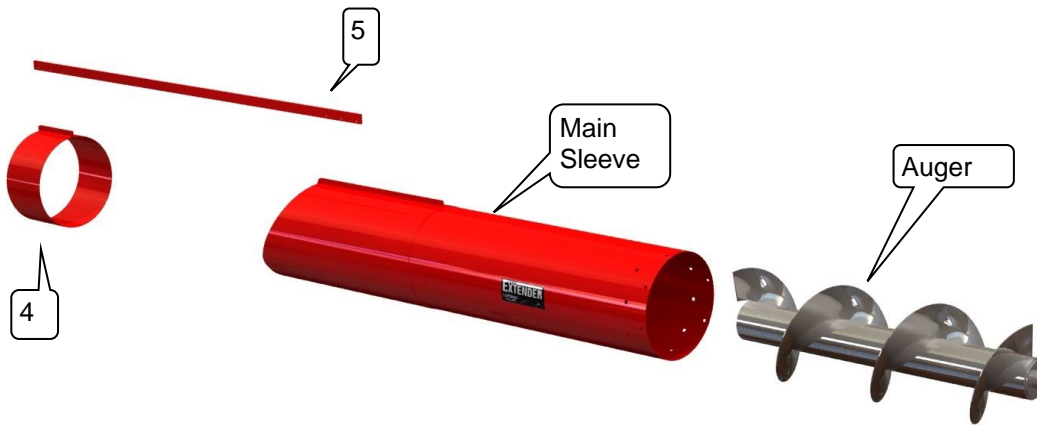




EMF9515

Extender

Box 1087
Weyburn, Sask., Canada
S4H 2L3
1-866-940-4411
Ph 306-842-4411



Parts list for FT 3 Extender

Description	Part Number	Quantity
1. Bolt Package	EBPK-SSS	1
2. Outer Tube	EMF9515-OT	1
3. Auger Unit	EMF9515-A	1
4. Support clamp	EMF9515-SC	1
5. Support brace	EMF9515-SB	1

COMBINE UNLOADING AUGER EXTENSION FOR: Massey 9895

Installation Instructions:

1. Remove plastic spout, bearing and holder and grain saver. Remove original unloading auger from tube making sure it is marked as to keep the auger in time when putting back in.

holes



fig 3



fig 4

2. Slide male end-shaft of auger into female end of The EXTENDER's auger. Line up flighting and tack weld at male/ female shaft joint and flighting joints. Trim flighting as needed so it meets evenly. After tack welding, roll auger to check for straight/ true. If straight and true, complete welds. SEE fig 3) Stagger welds to minimize heat warp/ shrink. Follow factory welds for pattern. Inspect auger for straight/ true after welding is completed by rolling on a flat floor or in stands. It is very important to ensure auger runs true before installing back into unloading tube. If heat warp/ shrinkage occurs, auger will "wobble" or vibrate inside unloading tube.

3. Place The EXTENDER's outer tube against the edge of the unloading auger's tube sliding the sleeve portion over the present tube. Install Support clamp and support brace. Install all sleeve & clamp bolts and tighten securely. Make sure bolts are at top of tube. Were the 2 holes are at the top of the extender sleeve portion(See Fig 4) drill out and install 5/16" bolt from the inside out on each . This will firm up the install on the sleeve

4. Hold grain saver door bracket up to its position and mount grain saver door. The tube may need to be trimmed in order for it to fit properly.

5. Reassemble unloading auger bearing hanger tube. Finally re-install plastic discharge spout in desired position using provided self drilling screws or by drilling out the holes and using the original nuts and bolts.

CAUTION:

* NEVER LEAVE UNLOADING AUGER FULL UNLESS ABSOLUTELY NECESSARY!